



# LYNCHBURG GE NEWS

PUBLISHED BY COMMUNICATION PROGRAMS OFFICE (EXT. 2511/2710) LYNCHBURG, VA

AN EQUAL OPPORTUNITY EMPLOYER

VOLUME 20 NUMBER 35

MONDAY, FEBRUARY 20, 1978

IN OBSERVANCE OF NATIONAL ENGINEERS WEEK...FEBRUARY 19-25, 1978:

## Don Meyers Talks About "Engineers--Strength in Crisis"

**Q.** This year's National Engineers Week theme is "Engineer--Strength in Crisis." What do you see as the major roles engineers must play in bringing about solutions to the crises which face our nation and the world?

**Don:** "As I see it, the world has two types of needs: spiritual and physical. Engineers play a critical role in helping to meet the physical needs of the world, and this comes into play particularly in light of the economic disparity which exists between nations.

"Engineers can and should work toward eliminating this disparity by technological means. Starvation isn't only a result of shortage of food; there's a surplus of food in some countries such as ours (thanks to our superb technological advances in food production in the past century); the problem includes distribution. This is also something engineers can do something about.

"And, of course, we need new and more plentiful sources of energy--and engineers are in the forefront of exploration, research, and development in this area.

"Therefore, if engineers can come up with solutions to the problems of food distribution and also of energy, there'll be a higher standard of living on a worldwide basis."



MRPD ENGINEERING MANAGER TOM MCKEE (left) shows National Engineers Week poster to MRPD General Manager Don Meyers.

**Q.** What do you think will be some of the important engineering achievements in this country in the next ten years?

**Don:** "As I've just indicated, development of new sources of energy will be a high priority item for engineers in the immediate future. Some of the possibilities are virtually limitless, such as solar energy. I don't think that we'll be using solar energy very heavily within the next ten years, but I think this will be a major source of energy in the next century.

"Within the next ten years I believe engineers will develop an economical and safe battery capable of powering an electric car far enough, between battery charges, to make this type of transportation feasible, at least for city travel. This will be beneficial in oil usage reduction and improved environment.

"Also within the next decade I think we'll see much more widespread use of computers--in business and

*See DON MEYERS, Page 2*

in the home--thanks to advances which engineers will be making in the field.

"If I may coin a word, I think we're going to see the electronification of just about everything during the next ten years. The benefits are what I'd call the 'four Ss'--small size, high speed, sanitation, and safety."

**Q. What do engineers mean to the future and growth of the Mobile Radio Products Department?**

Don: "They're absolutely critical! Engineers will be designing, producing and selling high quality, reliable products at the lowest possible cost...to give the customer added value and keep us in business.

"Here at MRPD we have a high quality product, and we absolutely have to maintain the superb technical resource we now have."

**Q. Here in Mobile Radio we have a fine engineering staff. However, there are many engineers working in other groups in the department. What particular talents do they bring to these positions?**

Don: "We have a great need for engineers in manufacturing to design equipment, processes, tools, and fixtures to produce our products.

"We need engineers in quality control to assure sustained production of products that meet specifications and will perform a long time in the field.

"We're beginning to get more and more engineers into the materials and shop supervision functions where their technical background is especially helpful.

"As for sales--we couldn't sell our complex systems worldwide without engineers who need to make very complex presentations and proposals to technically-sophisticated buyers. The

quality of these presentations and proposals is a major factor in winning contract awards.

"Regarding the talents which engineers bring to all of these areas: They're inquisitive, challenging, and determined to arrive at answers empirically, and without this discipline we wouldn't have had the technological revolution of the past hundred years."

**Q. Would you encourage your own children to consider a career in engineering?**

Don: "Yes, mine or anyone else's. The technological age is going to be with us for a long time, and certainly this career should be considered by all young people when the time comes to evaluate their future.

"It's a fascinating career, and one in which a person can see concrete results and benefit to mankind. These are very attractive opportunities."

CAFETERIA MENU FOR THIS WEEK FEBRUARY 20 through FEBRUARY 24

MONDAY, FEB. 20	TUESDAY, FEB. 21	WEDNESDAY, FEB. 22	THURSDAY, FEB. 23	FRIDAY, FEB. 24
Beef Liver w/ Smothered onions & Potatoes \$1.09	Chicken & Chow Mein o/ Rice w/ Noodles \$ .99	Spagetti w/ Meat Sauce & Garlic Bread \$ .99	Chili Beans w/ 4 oz. Tossed Salad \$ .99	Fried Fish w/ Slaw & French Fries \$1.09
Grilled Cheese & Ham on Bun w/ Slaw & Fries \$1.09	Country Style Steak w/ Potatoes \$1.09	Veal Cutlet w/ Mushroom Gravy & Potatoes \$1.09	Maryland Fried Chicken w/ Potatoes \$ .99	Roast Beef & Potatoes \$1.09

Plus...Assorted potatoes (20¢--25¢), vegetables (20¢--25¢), salads (25¢--80¢), cold sandwiches (45¢--80¢), and desserts (25¢--35¢).

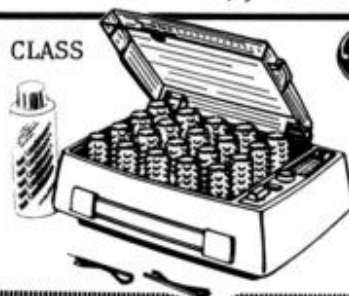
LUNCH PERIODS: 11 AM -- 1 PM and (for 2nd Shift at MVR Cafeteria), 7:30 PM -- 8:30 PM.

**BEAUTIFUL HAIR STYLES THREE WAYS**



EMPLOYEE STORE CLASS "A" PRICE;

**\$18.00**



**GE SPEEDSETTER HCD-4**

- Sets with mist, conditioner or dry in minutes.
- 20 tangle-free interchangeable rollers...6 jumbo, 10 medium, 4 small rollers.
- Heat comfort control regulates roller heat.
- Ready light signals when rollers are heated.

**Store Closed Today  
Hours Tomorrow 11 - 1 & 2 - 5**

THE EMPLOYMENT OFFICE REPORTS THE FOLLOWING OPEN POSITION: LG-04, Data Entry Operator, B. Gray, 2nd Shift, FAB, see posted job description. ALL FORMS SHOULD BE IN BY FEB. 23, 1978.