

Lynchburg GE NEWS

GENERAL ELECTRIC

RM. 1472, MOUNTAIN VIEW RD., LYNCHBURG, VA., 7511/7710

AN EQUAL OPPORTUNITY EMPLOYER

VOLUME 23

NUMBER 38

WEDNESDAY, FEBRUARY 25, 1981

Tom McKee shares his views of engineers' role in progress

To learn still more about how engineers are living up to the theme of National Engineers Week, "Engineers + Opportunity = Progress," the GE News solicited comments from Tom McKee, USMRD Manager of Engineering.

GE NEWS: What do you consider to be the greatest challenge facing Engineers today?

TOM: The United States is coming to realize that much of its industry is no longer competitive with the new plants of some of the other industrial countries. A major effort must be undertaken to modernize our industry and raise the productivity of our workers.

Engineers are key to this effort; and we have our work cut out for us for we are outnumbered, particularly by the Japanese engineers. They not only design fine pro-

ducts but are also able to field large teams of engineers to automate the production of the product.

Efficiently using our engineering resources both in Engineering and in Manufacturing to update our industries is, I believe, the major challenge facing U.S. Engineers today.

GE NEWS: How has an Engineer's work changed in the years you've been with GE?

TOM: I'll quickly mention three things in answer to this one.

The pace is faster. Today's GE engineers are doing a great job of designing products in a shorter time than was the norm when I joined GE over 20 years ago.

The computer has substantially changed the de-



sign process in many ways. It has helped speed up design work and has made possible products of a complexity undreamed of 20 years ago.

A greater percentage of our engineers work in Manufacturing today, and the cooperation between Engineering and Manufacturing is much better.

Non-exempt salaried invited to Speak-Up Friday

Ten non-exempt salaried employees will be in attendance at a Speak-Up meeting on Friday, February 27, at 10:00 a.m. The meeting, designed as a communication exchange between employees, is hosted by U.S. MRD General Manager Joe Ponzillo.

The meeting, held in Mr.

Ponzillo's conference room, is part of GE's speak-up program, and encourages employees to add their ideas to the progress of the business.

Invitations have been extended to: Sara Prillaman, Steno-Clerk; William Mann,

Disp./Exp.; Edwin Johnson, Lead Technician; Ann Phillips, Inst. Bk. Editor; Jim Franklin Jr., Electronic Tech.; Rosa Brown, Invoice Audit Clerk; Dolores Humphreys, Senior Editor; Bill Snead, Electronic Tech.;

Ryan Fifer, Technician; Phyllis Smith, Secretary.



Excellence recognized

Congratulations and thanks for fine service are due Joel Franklin, Officer of the Quarter of S&C Security, and all the security officers who work on our behalf. Above, Franklin, right, receives his well-deserved recognition with a smile at the hand of Captain of the Guard Force, Haywood Woodall.

"Joel has been exceptional in his duties as security guard and traffic officer," Capt. Woodall says. "He has kept the traffic flowing during the rush hours be it rain, snow or whatever. Officer Franklin's attention to duty has helped us obtain a good relationship between GE employees and S&C Security."

ANNOUNCEMENTS...

GROUP SEEKS ADULTS WILLING TO SHARE TALENTS WITH CHILDREN

The American Association of University Women is working in conjunction with Lynchburg Public Schools in establishing a list of resource people who would be interested in speaking and/or presenting a demonstration for the children. The master list with names and phone numbers would be kept in the office of the directors of volunteer services to insure that each resource person would only be called three or four times yearly.

Just a few ideas could include presentations concerning travels, slides, careers, poetry, story telling, trains, stamp collecting, biking, painting, magic, languages, crafts, flying, scuba diving, cooking, music, spinning, history, dogs, etc.

If you would be willing to share your time with the children of Lynchburg, please call 384-2753, 384-6936, or 525-4561. New ideas are most welcome.

CONGRATULATIONS!

Twin boys, Montaya and Montenev were born to Bernard and Sharon Wright on February 10, 1981. Bernard works at MVR and Sharon works at the Bradley Park plant.

HERITAGE HIGH SCHOOL CHOIR OFFERS SHAMROCK BALL TO RAISE \$\$

GE employees are invited to a Shamrock Ball featuring the "Big Band" sound by John McClenon and the Moonlighters.

The dance is sponsored by the Heritage High School Choir Boosters, and proceeds will go to the group's concert tour to the "Big Apple."

The dance will be held at the Leesville Road Moose Lodge on March 14, 1981 from 9 p.m. to 1 a.m. Set-ups will be furnished; there will be lots of door prizes. Dress will be semi-formal. Tickets will be available for an \$18 donation, call 237-0115 or 239-0536.

SOCIAL SECURITY SEMINAR SLATED FOR TODAY AT 4:30 P.M.

All employees are reminded that they and their spouses are invited to attend the Social Security Seminar scheduled for this afternoon at 4:30 in the MVR auditorium.

Whether you filled out the coupon printed in the *GE News* February 17 or not, you are welcome to come and ask questions of the two local experts who will be sharing pertinent information regarding the Social Security system, how it works, and what you can expect from your retirement income.



NEW D104 BASE STATION POWER mike, \$25. Chrome hand rail P.U. 6 ft. like new, \$25. Shure P.A. mike, \$50; Turner & 3 mobile power mike, \$15. Electric floor buffer, \$5. Call 946-7243 after 3 p.m.

TRAILER DOUBLE AXLE LOW BOY. Electric brakes & lights. Trailer-triple axle low boy. Heavy duty electric brakes. Call 332-7378

REGISTERED RED MALE DOBERMAN Pinscher. Dog w/dog house, \$100. Call anytime, 703-297-5729.

GE WASHER W/MINI BASKET, \$50. Call 384-3357.

WANT TO BUY

1978 KZ 650 SR KAWASAKI, \$1800. 237-1308 after 5 p.m. or anytime weekends.

USED PORT-A-CRIB IN GOOD condition. Call 846-2023.

VE DASHER 80 DIESEL, AC, Radio. 5,900 miles. Call 239-3653.

4 BR HOUSE NEAR GE PREFER-ably in Windsor Hills w/ assumable mortgage. Price range: \$70-90K. Call 525-1916 after 6.

KITCHEN SET--TABLE & CHAIRS--Baby car bed, GM infant car seat, elec. bottle sterilizer. Call 384-5968.

FOR RENT

PRIVATE TRAILER SITE. ROUTE 680 between Old 29 and 501. Call 239-7353 or 1-332-5904.

SERVICES

SMALL BRICK OR BLOCK JOBS. Reasonably priced. 237-1308 after 5 p.m. or anytime wkends.

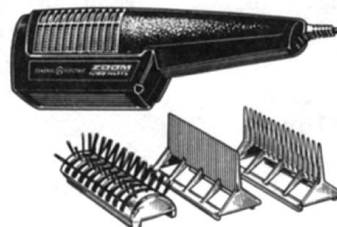
EMPLOYEE STORE

GE ZOOM 1200 WATTS STYLING DRYER

(SD9)

\$18.70

• DRY setting for full blow drying power. STYLE setting for styling, grooming hair. Three attachments for styling versatility.



Store Hours Today:

11 - 1 & 2 - 5