



LYNCHBURG GE NEWS

PUBLISHED BY EMPLOYEE AND COMMUNITY RELATIONS (EXT. 710) LYNCHBURG, VIRGINIA

VOLUME 11 NUMBER 158

THURSDAY, AUGUST 28, 1969

Devastation Described as "Incredible" in Flood-Stricken Areas

HOWEVER..."IF THERE'S ANYTHING THEY DON'T NEED" IN THE AREA...IT'S SPECTATORS AND CURIOSITY SEEKERS WITHOUT SPECIFIC TASKS; SUCH ACTIVITY INTERFERES WITH RESCUE AND REHABILITATION WORK

In an effort to determine how Lynchburg GE and its employees might make a further contribution toward relieving the distress in the flood-ravaged areas of Amherst and Nelson Counties, a tour has been made by a team from Employee and Community Relations to contact officials and volunteer workers at work in the area. The team heard much praise and gratitude for the efforts of so many people who have helped out already, and also a plea for spectators and curiosity seekers without specific tasks to stay out of the area. Today, and possibly tomorrow, as space permits, the *News* will publish photos and word pictures brought back by the E&CR team...as follows:

Approaching the Buffalo River, past the Amherst Circle, "Check Point Charlie," manned by State Police (permitting only authorized persons through), you get your first picture of the incredible force and depth of the water that came through the area, uprooting everything in its path, and creating huge mudslides.

Massie's Mill, Tyro, Roseland, Lovingson, and the Davis Creek--Woods' Mill area north of Lovingson all suffered heavy losses, yet emergency relief had been provided from the beginning by a corps of volunteer workers and helicopter and communication services. By early this week the areas were open to automobile traffic and telephone lines were working in parallel with emergency radio communication.

Virtually everywhere the request



RUBBLE AT THE BRIDGE AT MASSIE'S MILL provides mute testimony of the destruction wrought by the flood waters in the early morning hours of August 20. Countless similar scenes exist.

lack of cataloging and storage." However, it is clear that accumulating and cataloging of clothing for needs later this year is a worthwhile project. Men's, women's and children's underclothing is cited as one growing need.

The magnificent job by the State Highway Department crews, supplemented by private contractors, made possible a direct trip from Massie's



Mill to the Lovingson Command Post.

Meeting three funeral processions en route provided a grim reminder that the priority job at headquarters is still "search-and-rescue" of flood victims, yet a discussion with the Federal agencies, state Civil Defense and county authorities showed that progress is being made toward coordinating the housing, feeding, transportation and the many details of reclamation work.

The Salvation Army, Lynchburg and area Rescue Squads, and the Red Cross were all at various locations carrying out their assignments.

Everywhere praises were high for portable radio equipment. The headquarters people at Lovingson were most grateful for this equipment and people from Lynchburg GE as well as

DEVASTATION.....(Continued)

Club, since this was the only means of communicating until telephone service could be restored.

While they discouraged bringing more clothing into the area until storage facilities and individual needs can be determined, the long-range needs will be great.

Employees are encouraged to work through the church, civic club or UGF agency of their choice. These agencies will in time integrate their efforts with county and state authorities to get the right aid to the right place as needed.

Meanwhile, unless you're connected with a group that has a specific assignment or lost relatives in the area...you can help most by staying away from the area until the rescue operations are complete and all the roads are open for traffic.

FREE CHILDREN'S TICKETS TO "SCHOLARSHIP NIGHT" AT CITY STADIUM AVAILABLE

A limited number of children's tickets are available for the Lyn-Sox game Friday night at City Stadium at 7:45 p.m. Free prizes will be given, including a pony and scholarship.

Stop by the Employee Store today for your tickets.

DON'T FORGET...IMPORTANT BLOODMOBILE TODAY AT LYNCHBURG GENERAL HOSPITAL

Area blood supplies are low, and there's an important Bloodmobile visit today at the LGH Nurses' Residence, 12 noon to 6 p.m. Maybe you can make a donation after work? Another Bloodmobile visit is planned for Sept. 4 at the Presidential Motor Inn.

TUESDAY YELLOW LEAGUE FINAL STANDINGS

	Points
Blackburn (9)/Pickeral (13)	38
Fanning (11)/Lehmann (8)	35
Thyberg (14)/Ragan (8)	33
Jakobowski (12)/Lightner (17)	31
McCanna (17)/Gates (9)	30.5
Garnsey (17)/Taylor (18)	12.5

Low Net (70) Blackburn/Pickeral

MONDAY RED LEAGUE FINAL STANDINGS

	Points
Joe Reid/Ed Mitchell, Sr.	33.5
Bob Harper/Bill Stone	33
Ralph Staton/Leon Wiley	31
Dale Rayle/Gordon Bowyer	29
Dean Shelton/Joe Phillippe	25
Charles McKeag/Ray Ugron	22.5
Lew Gallion/Paul Scheib	22



LOVINGSTON Command Post. The Lynchburg Life Saving and First Aid Crew is on the job.

MASSIE'S MILL Amid the rubble, the Salvation Army ministers to stricken families.



AMERICAN RED CROSS disaster relief headquarters in Nelson County High School.

THE GE TENNIS TEAM defeated Babcock & Wilcox 10 matches to 4 on Tuesday, August 26. This was the second win of the year over B&W. Singles winners for GE were: Fred McWane, Steve Lehmann, Larry Marcy, Bill Rogers, Bill Hall, Bill Figel, Bill Snedden and Gary Gill. GE doubles winners were: Rogers/Figel and Snedden/Gill.

GENERAL ELECTRIC STOCK closed yesterday at 83-1/2, up 1/8.

TUESDAY GOLD LEAGUE FINAL STANDINGS

	Points
*Everett (6)/Beatrice (9)	33
*Cumby (9)/Poston (10)	33
Morley (6)/Minkler (8)	31.5
Goolsby (7)/Martin (8)	30
Bryant (6)/Eubank (12)	27
Layne (6)/Simpson (7)	26
Hutchison (11)/Ackley (11)	23
Lukanich (8)/Williams (11)	20.5

MEETING OF GEEWC TO BE HELD SEPT. 2

The first fall meeting of the General Electric Engineers Wives Club will take place at 8:00 p.m. September 2 in Quaker Memorial Presbyterian Church.

The program will be "Find Your Thing". It is to feature discussions by representatives of Fish, Red Cross, 5th Regional Juvenile Detention Home, Virginia League of Planned Parenthood and the Volunteer Coordinator for the Lynchburg Public School System as to ways the GEEWC can contribute to their programs.

Mrs. John Denny, Chairman of Community Services for the club, is in charge of the program.

Safety First to Last

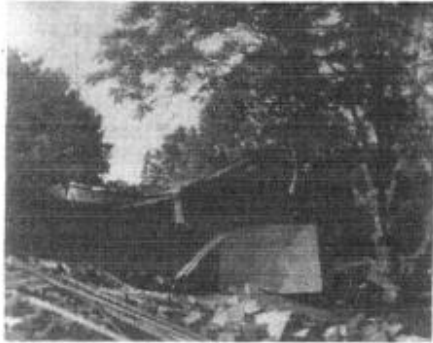


LYNCHBURG GE NEWS

PUBLISHED BY EMPLOYEE AND COMMUNITY RELATIONS (EXT. 710) LYNCHBURG, VIRGINIA

VOLUME 11 NUMBER 159

FRIDAY, AUGUST 29, 1969



REMNANTS OF A PACKING HOUSE swept across the highway at Massie's Mill.



HELICOPTER AND RUBBLE near the Command Post at Lovingson, Virginia.

Company-Wide Concern Expressed for Disaster Victims on Gulf Coast and Here in Virginia

General Electric employees from throughout the United States have been expressing concern about the plight of hurricane and flood victims on the Gulf Coast and in Virginia, according to a telegram received here from GE headquarters in New York.

The message stated that as soon as the news reached Company locations in New York and Pennsylvania, for example, employees had begun to form committees to assist their fellow employees down South, and by last Sunday (Aug. 24) a truck load of medical supplies, food and clothing donated by GE people in Philadelphia had arrived for use by GE employees at Bay St. Louis, Mississippi.

GE operates the Management Technical Services Department at Bay St. Louis, and its 1200 employees lived there and at Past Christian and Gulfport.

An estimated 130 employee homes in the Bay St. Louis area suffered either total destruction or major damage.

Among the homeless is John R. Picard, MSTD General Manager. When Camille had moved on, he took personal charge of the clean-up crews supporting the NASA effort to clear highways.

This week Picard had high praise for all members of his organization. He cited those employees who worked around the clock both at the plant and in adjacent communities. Many, he said, drove themselves beyond the limit of endurance, trying to bring order out of confusion, and by pitching in to render all possible aid to those less fortunate than themselves.

And, he said, he knew of numerous cases where GE people had performed acts of heroism, risking their lives in the flood waters to rescue other employees or neighbors. He told of one employee, Dave Wieting, who held two elderly people above water for five hours during the peak storm and the flood that followed.

There were many other examples of

(See COMPANY-WIDE CONCERN.....P. 2)

Gerry Kiouss To Head Newly-Created Data Communication Engineering Sub-Section

Creation of a new Data Communication Engineering Sub-Section, and the naming of Gerry Kiouss as its Manager, is being announced today by CPD Engineering Manager Dave Pinkerton.

The new subsection will come into being September 1, and its purpose is "to concentrate in one area the data communication engineering activities of the Telecommunication Products Department," according to Dave.

(As announced previously, CPD becomes TPD September 1, and on the same date Dave Pinkerton becomes Manager of the Power Line Carrier Operation as well as continuing to serve as Acting Manager of Engineering for TPD.)

Gerry, who has been Manager of Application Engineering for the past year, will continue to serve in this

Gerry says that the newly-created sub-section will work closely with the Data Products Marketing group under Wayne Evans and a similar group in manufacturing "to enable the Department to participate more heavily in the growing data communication business."

A native of South Mound, Kansas, Gerry holds the BSEE degree in electrical engineering from the University of Michigan.

Joining GE in 1948, Gerry held assignments in Fort Wayne, Indiana, and Syracuse, N.Y., before moving to Lynchburg in 1959 when CPD was moved here.

He has held varied engineering assignments with the Company, including project leader on several communication projects, as well as Manager, Military Equipment Engineer-



ing and Manager-Transmission Systems and Equipment Engineering.

Gerry is a Registered Professional Engineer in the state of Virginia and is a member of the IEEE.

GE Stock closed at 83 3/4.

courage and endurance and unusual performance.

"After the storm," Picard noted that, "many of our people performed, and are continuing to perform such tasks as searching for bodies, manning communication posts, driving ambulances and emergency vehicles, or dispensing food."

The trustees of the Company's Emergency Aid Plan were quick to respond to the needs of GE people in the disaster areas. E. S. Willis, Manager-Employee Benefits, has notified all Employee Relations Managers that the trustees have approved a change in the Plan expressly for this disaster case.

The change permits loans and grants to hourly and non-exempt employees to exceed the former \$500 limit, each going up to \$1,500, for a total of \$3,000. Service requirements are reduced from one year to 30 days. At MSTD applications for loans and grants are getting rapid processing.

ELECTRONICS I ALSO TO BE OFFERED...

The Adult Education office of the Lynchburg Public Schools has announced that the Electronics I course will be offered this Fall. The course will be taught in the E. C. Glass shop on Monday, Tuesday, Wednesday

Additionally, the Company is also attempting to provide such differing services as emergency legal counseling and advice and the renovation of electrical appliances damaged by the storm.

Medical Systems Department, Milwaukee, has donated for use throughout the emergency, a battery-powered mobile X-ray unit. It was airlifted last week to Hancock County Hospital, Bay St. Anne, Mississippi.

Mississippi GE management also worked closely with Jackson M. Balch, NASA's Mississippi Test facility manager, his deputy, Henry F. Auter, and with senior officials of the Boeing Company and North American Rockwell Corporation in coordinating relief efforts at the test facility and in the Gulf area.

Joint task forces were established to supervise housing, community support, employee aid and site restoration.

and Thursday nights from 6:30 p.m. to 10:30 p.m. Individuals interested may register now and through Sept. 5 from 8:30 a.m. daily and from 7:00 p.m. to 9:00 p.m. on all nights. Registration will take place in the School Administration Building, 11th and Court Streets, 845-6051.

The Company-wide roundup of activity and concern about the recent disaster states that assistance plans are under consideration at Company headquarters to meet pressing problems of employees affected by the flood conditions.

The word from Bay St. Louis--like the Nelson County area here--is that food and clothing are not needed at present. Supplies from the Red Cross and from Federal agencies have arrived in abundance, according to the report and, for the time being at least, storage and cataloging are the main efforts.

But, for the future, it will be a long, hard pull as families get rehabilitated. They'll keep on needing the concern and assistance of all of us as we support the organized disaster relief efforts of our churches, civic clubs, and United Givers' Fund agencies in the months ahead.

FOURTH OF NINE PAID HOLIDAYS THIS YEAR IS COMING UP THIS MONDAY (LABOR DAY)

Just in case it's slipped anyone's mind, Monday is a paid holiday for GE employees--the fourth of nine this year--so this will be a long holiday weekend.

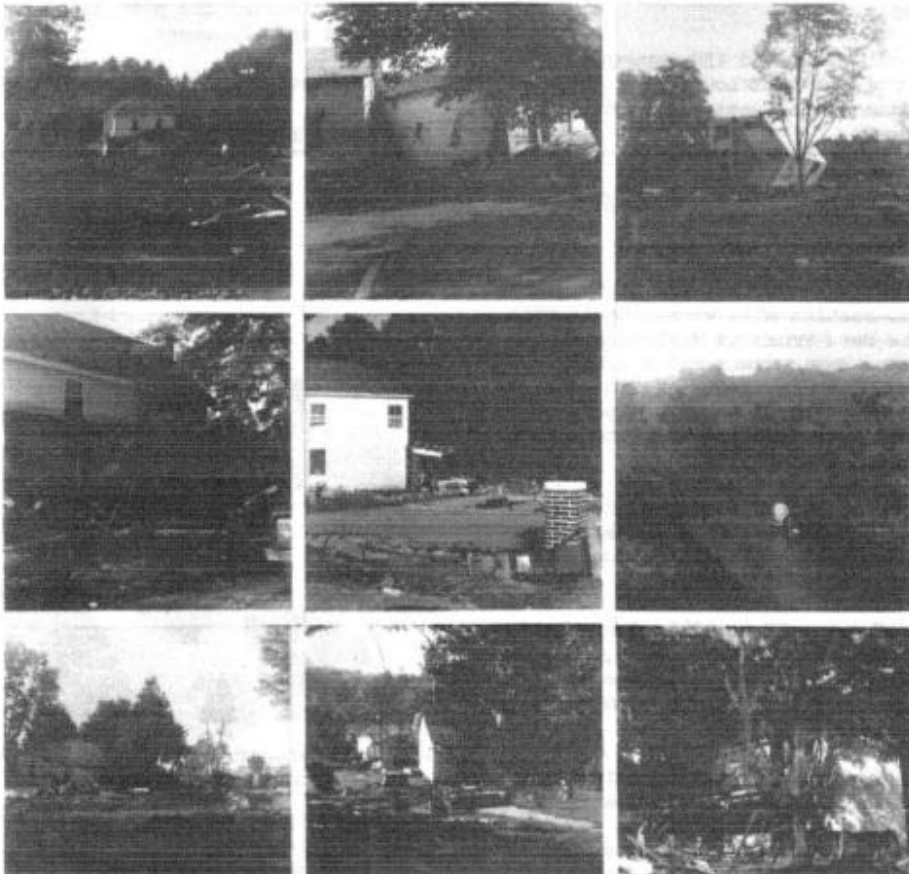
It's encouraging that we can look forward to five more days off with pay this year...and these days are "bunched" together at two popular holiday seasons: We'll be off Thursday through Sunday, November 27 through 30, for Thanksgiving...and Wednesday, December 24 through Sunday, December 28 for Christmas.

Have a nice weekend...and make sure you're back safe and sound Tuesday, September 2.

TRADING POST

For Sale: Dachshund puppies, 3 months old, black, 2 females. \$35/each. Call 384-1442.
 ...'68 Honda, 350 model, \$374. Call 845-1493 after 5:00 p.m.
 ...'68 Triumph motorcycle 250 cc, exc. cond. Call 847-4352 after 5:00 p.m.
 ...Portable stereo with speakers. \$40. Call 239-7218 after 5:00 p.m.
 ...Camping trailer. Reasonable. Call Brookneal, Va., 376-2524.
 ...'67 Mustang V8, Auto., power steering. \$1500. Call 239-9822.
 ...'62 Ford Galaxie, straight shift, new tires, 28,000 mi. \$550. Call VI 6-2965 after 6:00 p.m.
 ...'66 Ford pickup, 48,000 mi., exc. tires & mech. cond. \$995. Call 846-8883 after 4:30 p.m.
 ...'65 Chev. Impala conv., 327, st. drive, exc. cond. Must sell, going back to school. Call 239-4538.

HERE ARE SOME PHOTOS MADE IN THE MASSIE'S MILL AREA BY MRD PRODUCT SERVICE REPRESENTATIVE DAN CHANDLER:





LYNCHBURG GE NEWS

PUBLISHED BY EMPLOYEE AND COMMUNITY RELATIONS (EXT. 710) LYNCHBURG, VIRGINIA

VOLUME 11 NUMBER 182

THURSDAY, OCTOBER 2, 1969

Governor Godwin Salutes Lynchburg General Electric People For Assistance in Relief Communications in Recent Disaster



MILLS E. GODWIN, JR.
GOVERNOR

COMMONWEALTH OF VIRGINIA
GOVERNOR'S OFFICE
RICHMOND 23219

RECEIVED

SEP 22 1969

R. P. GIFFORD

September 19, 1969

Mr. R. P. Gifford
General Manager
Communication Systems Division
General Electric Company
Mountain View Road
Lynchburg, Virginia 24502

Dear Mr. Gifford:

On Wednesday, August 20, 1969, after a night of horror the like of which is not in the memory of contemporary Virginians, the General Electric Company Mobile Radio Department, recognized that due to the events of the night that disaster relief communications in and out of the Nelson County area would be nonexistent.



GOVERNOR MILLS E. GODWIN, JR.

Reproduced above is a small portion of a very nice letter received by CSD General Manager Dick Gifford from Governor Mills E. Godwin, documenting his appreciation for the contributions of many Lynchburg General Electric people, following the "night of horror" in the Nelson County area August 20.

"The performance of the General Electric Company, during this disaster, was in keeping with its outstanding record as a fine corporate citizen of the Commonwealth," observed Governor Godwin in his letter.

Citing Bob Johnston of MRD Drafting for his leadership role in the disaster communication network--involving the

cooperation of the Lynchburg Repeater Association, many GE amateur radio operators, the C&P Telephone Company, and the Appalachian Power Co.--as well as a number of sales and service people in the Richmond Regional Offices of MRD, Governor Godwin said:

"For fear of possibly omitting someone's name who performed yeoman service, I will not attempt to list all those who did such valiant and valuable work; but to all of them, the people of the Commonwealth of Virginia are most appreciative. I can only say thanks to all for a job well done."

Thanking Governor Godwin for his letter, Mr. Gifford said:

"I think you would want to know that the response of these individuals was spontaneous on their part. Having been deeply involved in mobile communications, they were only too aware of the service it can render under such circumstances, and were very quick to become involved in any way they could help--and through them to bring in the additional resource of the amateur radio operators....I might also add that each of the men felt a great sense of fulfillment in being able to render such service with its very personal involvement under such tragic circumstances. I'm sure this same team would be ready to respond again with equal fervor upon any other emergency request from the State."

Commonwealth of Virginia

GOVERNOR'S OFFICE

RICHMOND

September 19, 1969

Mr. R. P. Gifford
General Manager
Communication Systems Division
General Electric Company
Mountain View Road
Lynchburg, Virginia 24502

Dear Mr. Gifford:

On Wednesday, August 20, 1969, after a night of horror the like of which is not in the memory of contemporary Virginians, the General Electric Company Mobile Radio Department, recognized that due to the events of the night that disaster relief communications in and out of the Nelson County area would be nonexistent.

It is my understanding that at the request of the Chesapeake and Potomac Telephone Company in Lynchburg, the Appalachian Power Company was able to procure a helicopter and fly Mr. Bob Johnson into Lovingston with portable equipment that would work via a repeater owned by the Lynchburg Repeater Association to another unit in the Lynchburg C & P offices and then by land line to State Civil Defense headquarters and other disaster relief organizations. The value of this link into and out of Nelson County was of inestimable value.

Our contact people in Richmond, who helped set up this system to the Virginia Civil Defense headquarters, were Mr. S. H. Gaulding, Mr. Fred Christopherson, Mr. Bob Raper, and Mr. McAdoo Brington (through whose equipment we first made contact into this system).

Mr. R. P. Gifford
Page 2
September 19, 1969

On the Lynchburg end of the circuit there were involved some thirty (30) amateur radio operators, most of whom are General Electric employees as well as members of the Lynchburg Repeater Association.

Another valuable service was performed by Mr. Bill Bennett, in conjunction with Mr. George Bishop, who also provided extra portable ground to ground and ground to air search equipment which has and still is proving to be most valuable.

The performance of the General Electric Company, during this disaster, was in keeping with its outstanding record as a fine corporate citizen of the Commonwealth.

For fear of possibly omitting someone's name who performed yeoman service, I will not attempt to list all those who did such valiant and valuable work; but to all of them, the people of the Commonwealth of Virginia are most appreciative. I can only say thanks to all for a job well done.

Sincerely,

cc: Mr. J. H. Metzger, Jr.
District Plant Manager
C & P Telephone Company
Lynchburg, Virginia 24505

Mr. Joe P. Gills
Executive Vice President
Appalachian Power Company
Post Office Box 2021
Roanoke, Virginia 24009

Mr. James D. Anos
Trustee

September 25, 1969

The Honorable Mills E. Godwin, Jr.
Governor
Commonwealth of Virginia
Richmond, Virginia 23219

Dear Governor Godwin:

You were most thoughtful to document your appreciation for the contributions of many of our people in the General Electric Mobile Radio Department. I think you would want to know that the response of these individuals was spontaneous on their part. Having been deeply involved in mobile communications, they were only too aware of the service it can render under such circumstances, and were very quick to become involved in any way they could help -- and through them to bring in the additional resource of the amateur radio operators.

As your letter notes, there was considerable teamwork assist from the Appalachian Power Company and the C & P Telephone Company, as well as the Lynchburg Repeater Association -- a marvelous demonstration of what diverse private and industrial resources can do in such an emergency.

I might also add that each of the men felt a great sense of fulfillment in being able to render such service with its very personal involvement under such tragic circumstances. I'm sure this same team would be ready to respond again with equal fervor upon any other emergency request from the State.

Governor Godwin.

2

9/25/69

Again, speaking for these people, I want to thank you for taking the time to extend your very personal thanks.

Sincerely,



R. P. GIFFORD

RPG:H

cc: Mr. James D. Amos
Mr. Joe P. Gills
Mr. J. H. Metzger, Jr.

COMMUNICATION SYSTEMS DIVISION
Lynchburg, Virginia
September 10, 1969

Messrs:	Jim Amos	Wayne Dalton	Seymour Paul
	Doug Baker	Ken Guthrie	George Rose
	Ed Bolen	Henry Holcomb	Dick Seifert
	Dick Boswell	Bob Johnston	Carl Sensabaugh
	Don Brah	Tom McKee	Frank Spivey
	Bob Brown	Bob Martin	Dennis Sweeney
	Mac Bruington	Fred Mann	Lyn White
	Macon Carwile	Dan Murray	
	Bob Chase	Harry Miller	
	Ed Cox	Pete Lascell	

Gentlemen:

The attached letter and my reply might well speak for themselves, but I do want to add a special note of thanks to you for your extra efforts. The satisfaction that each of you must have enjoyed now spreads to our entire General Electric team here in Lynchburg.

Sincerely,



R. P. GIFFORD

RPG: H
attach.

THE CHESAPEAKE AND POTOMAC TELEPHONE COMPANY
OF VIRGINIA

LYNCHBURG, VIRGINIA

September 4, 1969

TELEPHONE
848-0141

J. H. METZGER, JR.
DISTRICT PLANT MANAGER

Mr. Richard P. Gifford,
General Manager
Communication Systems Division
The General Electric Company
Mountain View Road,
Lynchburg, Virginia 24502

RECEIVED
SEP 5 1969
R. P. GIFFORD

Dear Mr. Gifford:

My sincere thanks to the General Electric Company for the use of the PR-36 personal radio, as well as other radio equipment, and technical support during the first days of the recent flood disaster.

This equipment was part of a disaster communication network based at our Timberlake Road Central Office. Many of the local amateur radio operators who manned this system are General Electric employees. These men came off vacation, rearranged work schedules and worked after hours to keep the network in constant operation from 2:00 P.M. August 20, 1969 through 7:00 P.M. August 24, 1969.

The network handled messages from survivors, rescue and law enforcement organizations, the Governor, both of Virginia's U. S. Senators and the White House. The network was shut down only when communication had been reestablished through normal channels and disaster communication had been taken over by State and local agencies.

Some of the General Electric employees who made a substantial contribution through the use of equipment, technical support and their time and talent are on the attached list.

You can be proud to have these men as part of the General Electric family. They filled a vital need at a critical time in the highest tradition of the Bell System Spirit of Service.

Sincerely yours,


District Plant Manager

Attachment.

September 10, 1969

Mr. J. H. Metzger, Jr.
District Plant Manager
The Chesapeake and Potomac Telephone
Company of Virginia
Lynchburg, Virginia

Dear Mr. Metzger:

Thank you very much for your letter of appreciation for the assistance lent by many of our people during the first days of the recent flood disaster. I will extend your kind thoughts to these people.

I usually find, however -- as I'm sure you do -- that people in the communication field are quite naturally pleased to have an opportunity to bring forth their extra skills in behalf of their fellow-man in times of emergency. I daresay all of these men enjoyed the opportunity to serve along with you and the entire staff of The Chesapeake and Potomac Telephone Company in bringing the first semblance of order out of chaos.

Again, thank you for providing us with a complete record of their services.

Sincerely,

R. P. GIFFORD

RPG:H

BCC: M. C. Elcan



LYNCHBURG GE NEWS

PUBLISHED BY EMPLOYEE AND COMMUNITY RELATIONS (EXT.710) LYNCHBURG, VIRGINIA

An Equal Opportunity Employer

VOLUME 13 NUMBER 3

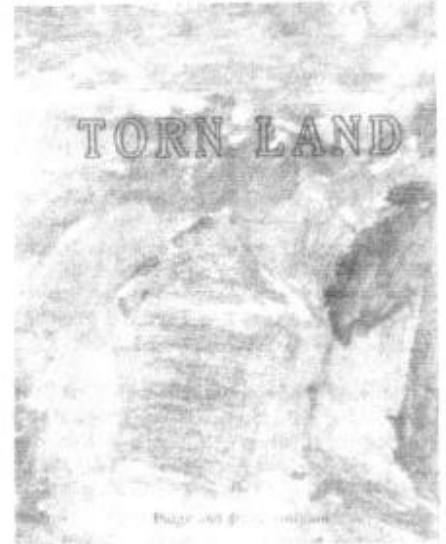
WEDNESDAY, JANUARY 6, 1971

New Book--"Torn Land"--Vividly Describes Nelson County Flood

MANY GE EMPLOYEES WILL NEVER FORGET THE FATEFUL NIGHT OF AUGUST 19-20, 1969; BOOK REFERS TO EFFORTS OF GE PEOPLE

It's been said that almost every American living at the time of the attack on Pearl Harbor remembers what he was doing on December 7 or 8, 1941, when he first heard the devastating news. The same undoubtedly holds true for virtually every Lynchburg GE employee...and indeed just about everyone in this part of Virginia...on August 20, 1969, as we began to realize, ever so slowly, how awful was the disaster a few miles to the north of here.

(It was shortly after noon on August 20, for example, when an employee called the *News* office to inquire whether the bridges over the James River would still be open when they left the plant at 4:00 o'clock...and we laughed at such a ridiculous question. As the day wore on, and more and more frightening reports began to trickle in, it suddenly was no longer a laughing matter!)




DUST JACKET OF "TORN LAND" is a crayon and watercolor representation of the flood.

To relive that fateful day, through the memories of a few of the individuals most deeply involved in the disaster and the recovery effort, you will want to read *Torn Land*, by Paige and Jerry Simpson, and published by J. P. Bell Company, Lynchburg, October, 1970. The book, commissioned by the Nelson County Chamber of Commerce Book Committee, is highly readable; many who have read it have remarked, "I couldn't put it down until I had finished it."

It's highly controversial, too, so this review is by no means intended as an endorsement of the book, or of the opinions expressed by the authors. Simpson and his wife live in Waynesboro; he

(See "*TORN LAND*,".....Page 2)

REMEMBER THIS ISSUE OF THE NEWS a week after the flood?



LYNCHBURG GE NEWS

PUBLISHED BY EMPLOYEE AND COMMUNITY RELATIONS (EXT.710) LYNCHBURG, VIRGINIA

VOLUME 11 NUMBER 158 THURSDAY, AUGUST 28, 1969

Devastation Described as "Incredible" in Flood-Stricken Areas

HOWEVER... "IF THERE'S ANYTHING THEY DON'T NEED" IN THE AREA...IT'S SPECTATORS AND CURIOSITY SEEKERS WITHOUT SPECIFIC TASKS; SUCH ACTIVITY INTERFERES WITH RESCUE AND REHABILITATION WORK

In an effort to determine how Lynchburg GE and its employees might make a further contribution toward relieving the distress in the flood-ravaged areas of Amherst and Nelson Counties, a tour has been made by a team from Employee and Community Relations to contact officials and volunteer workers at work in the area. The team heard much praise and gratitude for the efforts of so many people who have helped out already, and also a plea for spectators and curiosity seekers without specific tasks to stay out of the area. Today, and possibly tomorrow, as space permits, the *News* will publish photos and word pictures brought back by the E&CR team.



RUBBLE AT THE BRIDGE AT MASSIE'S MILL provides mute testimony of the destruction wrought by the flood waters in the early morning hours of August 20. Countless similar scenes exist.

TORN LAND.....(Continued)

is a journalist and novelist and associate state editor of *The Daily Progress* in Charlottesville. Mrs. Simpson is a housewife.

The Simpsons describe the "earth-dissolving downpour" as having been spawned by Hurricane Camille, which the National Hurricane Center has called "the greatest recorded storm ever to hit a heavily populated area of the Western Hemisphere."

THE ROLE OF GE COMMUNICATIONS

Time and again throughout *Torn Land*, there are references to Lynchburg General Electric and its employees. For example, here are a few comments recorded in an interview with Austin Embrey, clerk of Circuit Court and clerk of the Board of Supervisors of Nelson County, in which he recalled the radio communications set up by GE employees:

"Their communications did us an awful lot of good. They brought their radios with them. They had a real good system everywhere. They kept on expanding it and expanding it and expanding it. They brought all this stuff in here, no charge, new stuff, and over there at the Control Center that stuff took a beating with all that dust stirred up everytime a chopper came in or took off."

The book goes on to note that "despite difficulties, General Electric volunteers set up radio communications at schools that served as food and clothing distribution points, at emergency offices in the Court House, at remote village rescue and relief stations, wherever anyone wanted them."

Chapter 9 of *Torn Land* is devoted to Clifford E. Wood, who, as vice chairman of the Nelson County Board of Supervisors was the ranking local authority for coordinating and directing the county's operation



LYNCHBURG GE NEWS

PUBLISHED BY EMPLOYEE AND COMMUNITY RELATIONS (EXT. 710) LYNCHBURG, VIRGINIA

VOLUME 11 NUMBER 162

THURSDAY, OCTOBER 2, 1969

Governor Godwin Salutes Lynchburg General Electric People For Assistance in Relief Communications in Recent Disaster

COMMUNWEALTH OF VIRGINIA
GOVERNOR'S OFFICE
RICHMOND 22216

RECEIVED
SEP 22 1969
R. F. GIFFORD

September 19, 1969

Mr. E. F. Gifford
General Manager
Communication Systems Division
General Electric Company
Mountain View Road
Lynchburg, Virginia 24502

Dear Mr. Gifford:

On Wednesday, August 20, 1969, after a night of horror the like of which is not in the memory of contemporary Virginians, the General Electric Company Mobile Radio Department, recognized that due to the events of the night that disaster relief communications in and out of the Nelson County area would be essential.



GOVERNOR MILLS E. GODWIN, JR.

throughout the emergency. Mr. Wood makes frequent references to the GE radio equipment and the GE employees who helped to man the communication system. He refers on Page 110 to a "ham radio operator by the name of Johnson" who was, of course, Bob Johnston of MRD Drafting.

There's a salute, too, to the Lynchburg Life Saving and Rescue Squad headed by Kimball Glass, boiler room operator here at the Mountain View Plant. This reference is on page 211. And, on page 217 the high-rise antenna installed by GE volunteers is noted.

The Rev. John W. Gordon, Jr., notes in his interview...in Chapter 15 which is devoted to him...that "the GE plant in Lynchburg supplied portable radios, and the crews could talk to us with these. We used the radios in the more isolated places to speed communications." A similar

acknowledgement of GE equipment is made in Chapter 17 by James L. Tribble of the State Office of Civil Defense.

The efforts of Lynchburg General Electric and its employees were acknowledged also by Major General Alfred B. Denniston, at the time coordinator of Civil Defense and Director of Emergency Planning for the Commonwealth of Virginia, in a report to the U. S. Senate's special sub-committee on disaster relief of the Committee on Public Works, in a hearing held in Roanoke on Feb. 1 and 2, 1970. This reference appears on page 421 of *Torn Land*.

Earlier, the authors had noted, on page 400 that "communications, except for telephone, were by far the greatest problem encountered during the flooding." Then, they noted General Electric Company's loan of Porta Mobil units which helped alleviate this problem.

There is, of course, much, much more of interest in *Torn Land* in addition to the references to GE. But there's a special bit of food for thought for everyone--and especially Lynchburg GE people--in a couple of quotes from Nelson County Sheriff William H. Whitehead. These quotes appear on pages 168 and 169 of the book:

"Lack of communication is a bad thing. I'm not talking just about electronic communication. I mean between people, whether it's by radio, telephone or face to face.

"The lack of communication is a

TRADING POST

For Rent: Unfurnished large one bedroom apt., Old Forest Rd. Elec. heat. Call 846-1931.

Wanted: Children to keep in my home, 1st or 2nd shift, hot meals, references. Timberlake area. Call 237-0917. ...Go-cart, any cond. Call 237-0602 after 4:30 p.m.

Ride Wanted: From Greenbrier Apts. to CAP, 7:30-4:00. Call 846-5339 after 4:30 p.m.

For Sale: '57 1/2 ton pickup truck, 6 cyl., custom cab, clean body, new seats, motor needs to be overhauled. Call 845-6260 after 5:00 p.m. ...Canon FT-QL w/1.2 lens, also 35 mm/2.8 Soligor wide angle elec. flash, filter set. 2X telxtender. only used

7470 after 5:00 p.m. ...10 gal. aquarium w/air filter, pump, heater, thermometer, divider, breeder tank, reflector, fish net, gravel, & fish. \$22. Call 239-3165. ...Walnut writing desk, 29" high, top measures 24" x 5 ft., modern design. \$35. Call 239-4653 after 5. ...'68 SS Chevelle, 396 eng., 325 h.p., 35,000 mi. \$400. Take over payments of 12 months. Call 352-7084. ...Royal elec. typewriter, 13" carriage, carbon & fabric ribbon, elite, clean, perfect cond. \$135. Call 239-0708. ...Choice beef by the half, 65¢/lb., cut, wrapped & frozen. Call 239-0911. ...GE double door refrig./freezer, 18 cu. ft., good cond. Call 847-4771.